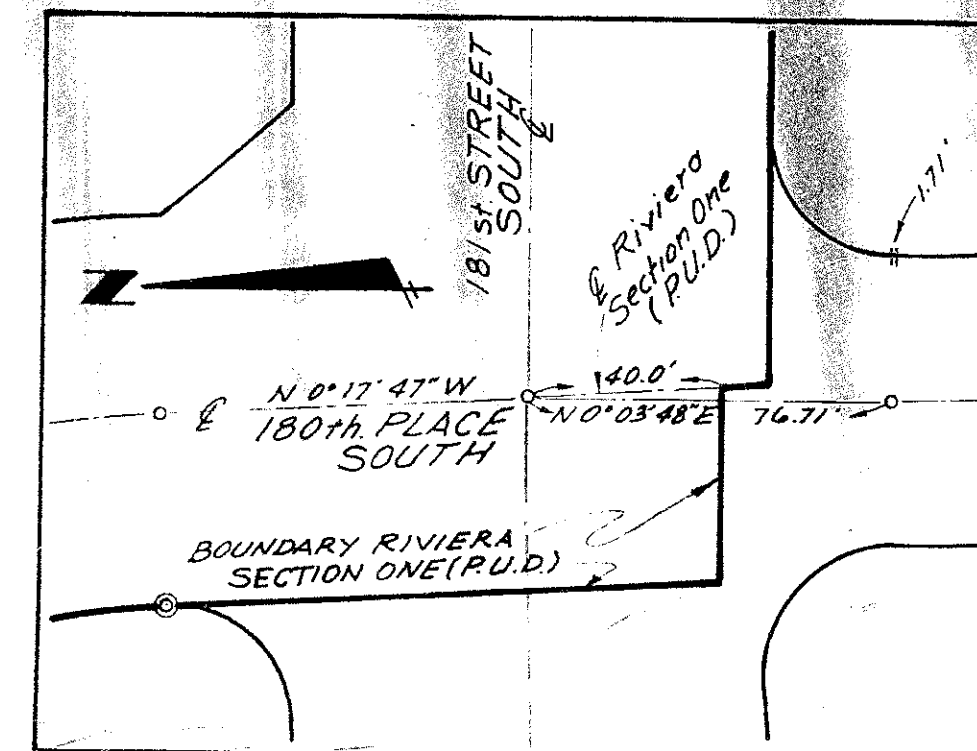


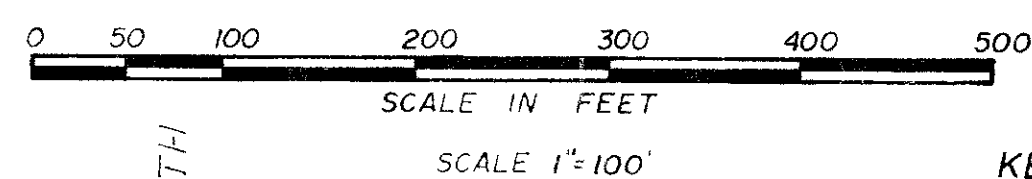
BOCA CHASE SECTION ONE

(A PORTION OF RIVIERA P.U.D.)

A PORTION OF TRACTS 9, 10, 11, 12, 13 & 14 FLORIDA FRUIT LANDS COMPANY'S SUB. NO. 2 OF SECTION 1, TOWNSHIP 47 S., RANGE 41 E. (1-102 P.B.R.) PALM BEACH COUNTY, FLORIDA.



DETAIL "A" Scale: 1"=40'



PREPARED BY

KEYSTONE ENGINEERING INC.
6301 N.W. 9th AVE. SUITE B
FORT LAUDERDALE, FLORIDA

ORDER NO. 37213-E



No.	CHORD	RADIUS	ARC
1	0.0000	0.0000	0.0000
2	0.0000	0.0000	0.0000
3	0.0000	0.0000	0.0000
4	0.0000	0.0000	0.0000
5	0.0000	0.0000	0.0000
6	0.0000	0.0000	0.0000
7	0.0000	0.0000	0.0000
8	0.0000	0.0000	0.0000
9	0.0000	0.0000	0.0000
10	0.0000	0.0000	0.0000
11	0.0000	0.0000	0.0000
12	0.0000	0.0000	0.0000
13	0.0000	0.0000	0.0000
14	0.0000	0.0000	0.0000
15	0.0000	0.0000	0.0000
16	0.0000	0.0000	0.0000
17	0.0000	0.0000	0.0000
18	0.0000	0.0000	0.0000
19	0.0000	0.0000	0.0000
20	0.0000	0.0000	0.0000
21	0.0000	0.0000	0.0000
22	0.0000	0.0000	0.0000
23	0.0000	0.0000	0.0000
24	0.0000	0.0000	0.0000
25	0.0000	0.0000	0.0000
26	0.0000	0.0000	0.0000
27	0.0000	0.0000	0.0000
28	0.0000	0.0000	0.0000

Notes:

- 1) © Indicates Permanent Reference Monument (P.R.M.)
- 2) © Indicates Permanent Control Point (P.C.P.)
- 3) Bearings shown herein are based on assumed meridian
- 4) All Block corner radii are 25 feet, unless show otherwise
- 5) Distances on Block corners are to the intersection of Block lines extended unless shown otherwise.
- 6) U.E. indicates Utility Easement
- 7) D.E. indicates Drainage Easement
- 8) There shall be no buildings or other structures placed in Utility or Drainage Easements

This Plat Prepared By:
Keystone Engineering Inc.
Drawn By:
John D. Weaver & Harry J. Miller

BOCA CHASE - SECT

0303-307

34

12